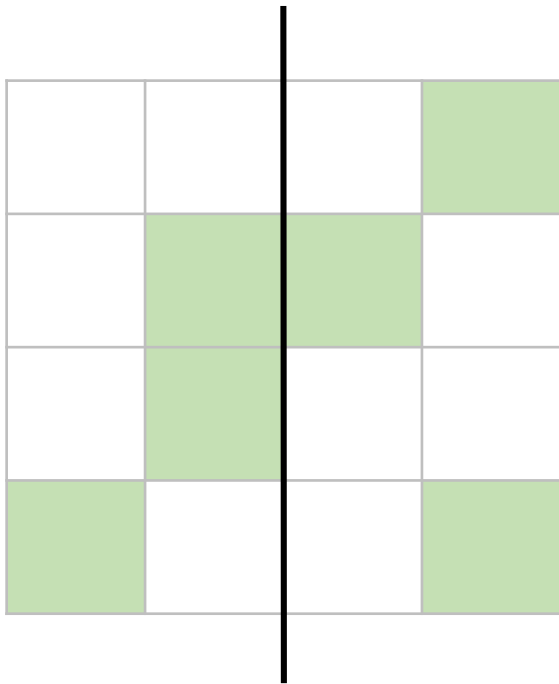
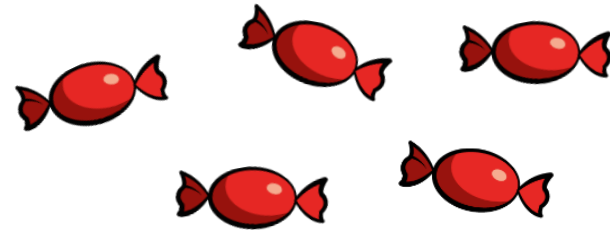


- 1 Shade in 2 more squares so that the black line is a line of symmetry.



- 2 Beth buys these sweets.



She pays with a £1 coin.

She gets 65p change.

How much does each sweet cost?

1 Tanya bakes some cookies to sell.

- By 1pm she has sold 29 cookies.
- By 3pm she has sold 50% of all the cookies.
- At 3pm she has 72 cookies left.

How many cookies does she sell between 1pm and 3pm?

2 David has 3 number cards.

- The sum of A and B is 120
- The sum of B and C is 150
- If you subtract B from C you get 12

What is the value of A?

